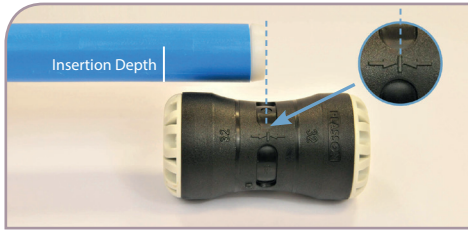
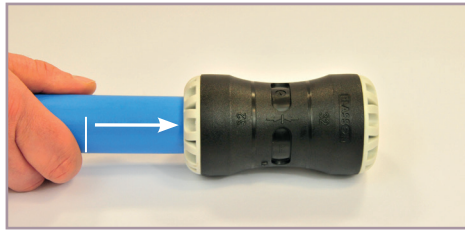


PLASSON pushfit fitting instructions

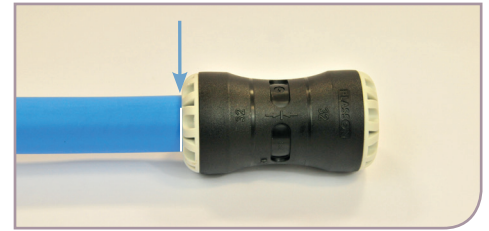
Assembly



Insert liner into pipe then measure and mark correct insertion depth against fitting as shown.



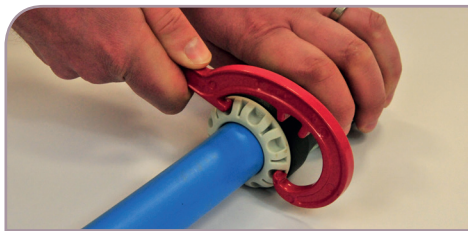
Push pipe into fitting up to the mark ensuring the pipe has been pushed passed the internal 'O' ring.



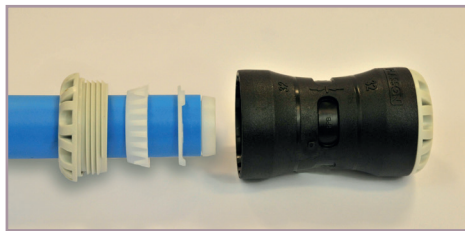
Make sure the mark on the pipe is inline with the end of the fitting.

Note: For assembly of Cu/PB/PEX, follow instructions above but ensure pipe manufacturers liner is fitted where applicable as per their instructions.

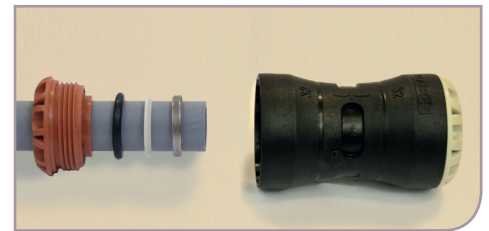
Disassembly



Using the Pushfit wrench, turn the nut anticlockwise to release pipe from fitting.



If the fitting is to be reused, the split ring, grip ring, and nut **MUST** be inserted in the order shown.



The metal grip ring in the copper/PB/PEX fittings **MUST** be replaced if the fitting is reused. Reassemble in the order shown.

PLASSON pushfit Universal

For connecting PE to other pipe materials such as imperial polyethylene, copper, lead, PVC, poly-york and galvanised iron.

Assembly



Prepare the pipe by removing any unsound material adhering to the pipe then cut and de-burr pipe as necessary.



Push the pipe into the fitting up to the internal stop.



Tighten firmly using a PLASSON wrench or similar.

Global Presence - Local Commitment

www.plasson.co.uk

 PLASSON[®] UK